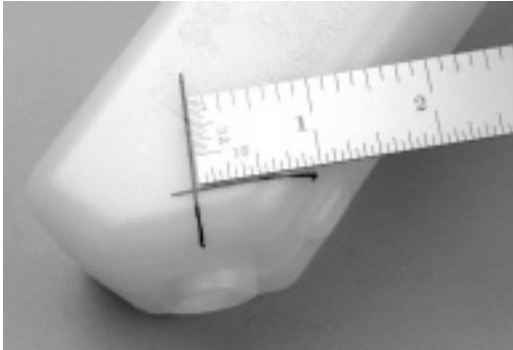
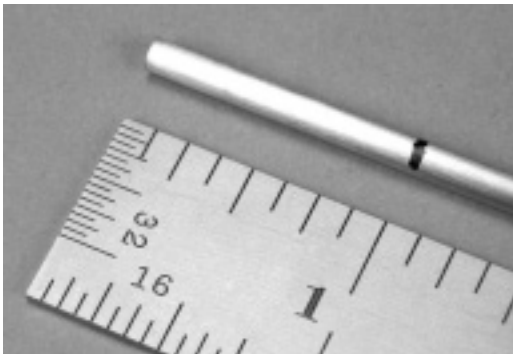


Bending Brass Tubing



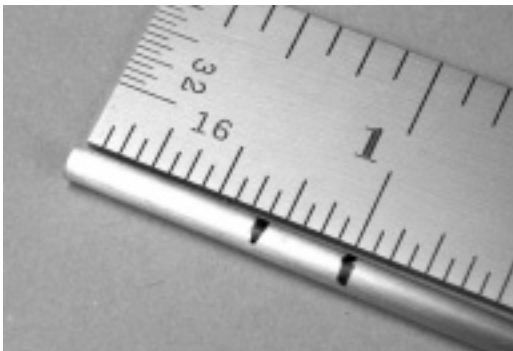
Step 1

The lines drawn on the Sullivan tank in Steps 1 shows that the upper tube (vent tube) in Step 8 has an internal right angle bend with one leg an inch long. Having an exact 1" leg is great engineering or unbelievably good luck for Sullivan's engineers. Our Biso Bender makes this bend easily.



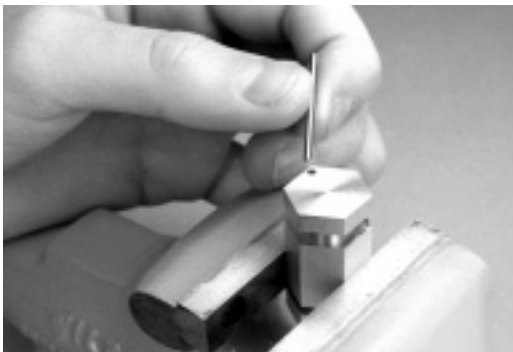
Step 2

First, mark the tube one inch from its end.



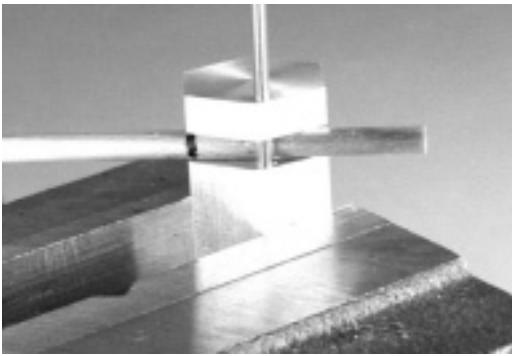
Step 3

Then, make a second mark $\frac{5}{16}$ " farther away from the bend.



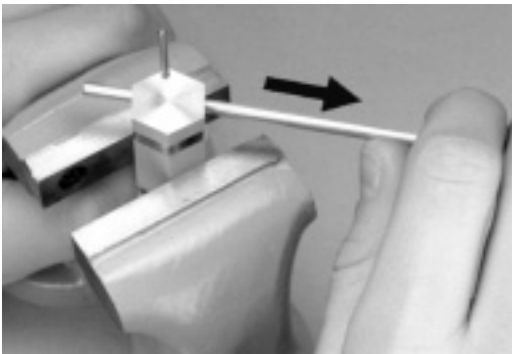
Step 4

Remove the bender's pin.



Step 5

Put in the tubing and replace the pin. Slide the tube so its second mark, made in made in Step 3 rests under the pin.



Step 6

Now, begin bending but only enough to lock the tube in place. Then, pull hard in the direction of the arrow.



Step 7

Continue pulling like that and wrap the tube around the bender's center post until you get a right angle.



Step 8

The completed bend and final installation.

